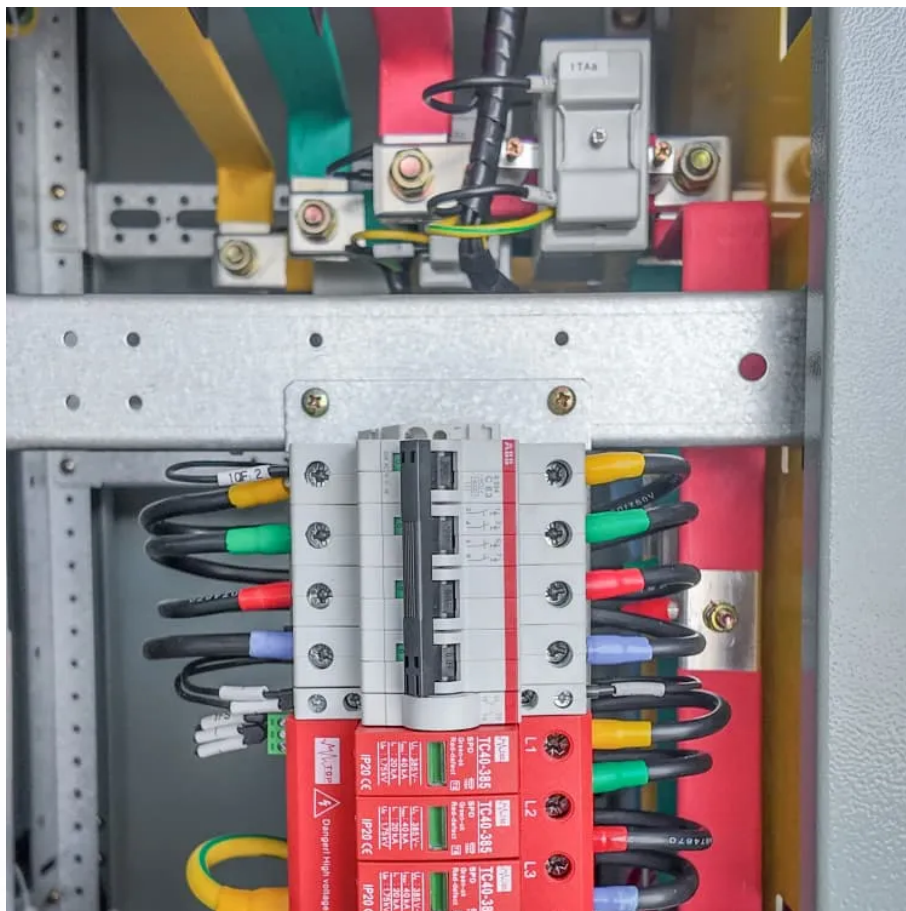


# Wind power station system





## Overview

---

What is wind power?

Wind power is a form of energy conversion in which turbines convert the kinetic energy of wind into mechanical or electrical energy that can be used for power. Wind power is considered a form of renewable energy. Modern commercial wind turbines produce electricity by using rotational energy to drive a generator.

How do wind power stations work?

A wind power station, often known as a wind farm, captures wind's kinetic energy and turns it into electricity. Here's an explanation of how do wind power stations work internally: 1. Wind Turbines: Wind turbines are the principal component of a wind power facility. They consist of enormous blades attached to a hub installed on top of a tall tower.

What are wind energy systems?

Wind energy systems harness the kinetic energy from wind and convert it into electricity, playing a crucial role in the global shift towards sustainable energy solutions.

What are wind power plants & how do they work?

Wind power plants, often known as wind farms, have become symbols of the renewable energy revolution. But what precisely are wind power plants, and how do they operate?

Let's take a closer look at how wind power stations work. A wind power station, often known as a wind farm, is a facility that converts wind energy into electricity.



## Wind power station system

---

Wind Energy Systems: How It's Work, Types, Advantages and ...

Oct 25, 2024 · Wind energy systems convert wind's kinetic energy into electricity, crucial for sustainable energy. Discover the types, benefits, and challenges.

---

Wind Energy Systems: How It's Work, Types, Advantages ...

Oct 25, 2024 · Wind energy systems convert wind's kinetic energy into electricity, crucial for sustainable energy. Discover the types, benefits, and challenges.

---

How Do Wind Power Stations Work? A ...

May 15, 2024 · Wondering how do wind power stations work? A wind power station captures wind's kinetic energy and turns it into electricity.

---

Research and Design of High Altitude Wind Power Station ...

Result Based on microservices, an intelligent operation and maintenance visualization platform for high-altitude wind power station is developed to realize centralized monitoring of power ...

---

High-Efficiency Wind Power Station: Advanced Renewable ...

Modern wind power stations incorporate advanced monitoring systems and smart grid integration capabilities, allowing for real-time performance optimization and efficient power distribution. ...

---

Wind power , Description, Renewable Energy, Uses, ...

Nov 21, 2025 · Wind power is a form of energy conversion in which turbines convert the kinetic energy of wind into mechanical or electrical energy that can be used for power. Wind power is ...

---

How Do Wind Turbines Work? , Department of Energy

2 days ago · Primus WindPower , 44231 Small turbines can be used in hybrid energy systems with other distributed energy resources, such as microgrids powered by diesel generators, ...

---

Wind power stations

When it comes to high availability and reliability of wind energy systems, the plant operator has just one objective - to avoid any unexpected downtime ...

---

Wind power stations

When it comes to high availability and reliability of wind energy systems, the plant operator has just one objective - to avoid any unexpected downtime or problems with everyday operation. ...

---

Wind Power , Yokogawa Electric Corporation

Wind Power Generation Process A wind power generation system, or wind turbine, is comprised of components such as an electrical generator, ...

---



## Wind Power , Yokogawa Electric Corporation

Wind Power Generation Process A wind power generation system, or wind turbine, is comprised of components such as an electrical generator, power converter, blades, hub, nacelle, and ...

---

## Sail Wind Power Stations: Evaluating the Efficiency of ...

Sep 18, 2024 · Technical systems designed to generate electric energy based on the use of wind energy are wind power stations (WPSs). Today, turbine wind power stations (TWPSs) with ...

---

## How Do Wind Power Stations Work? A Detailed Look Inside

May 15, 2024 · Wondering how do wind power stations work? A wind power station captures wind's kinetic energy and turns it into electricity.

---

## Wind Power Station

This implies that there will be capacity deficit during 25 hr in that week. Now assume that wind power is introduced in this system and that available capacity is increased according to Figure ...

---

## Contact Us

---

For technical specifications, project proposals, or partnership inquiries, please visit:

<https://flightmasters.eu>

## Scan QR Code for More Information





<https://flightmasters.eu>