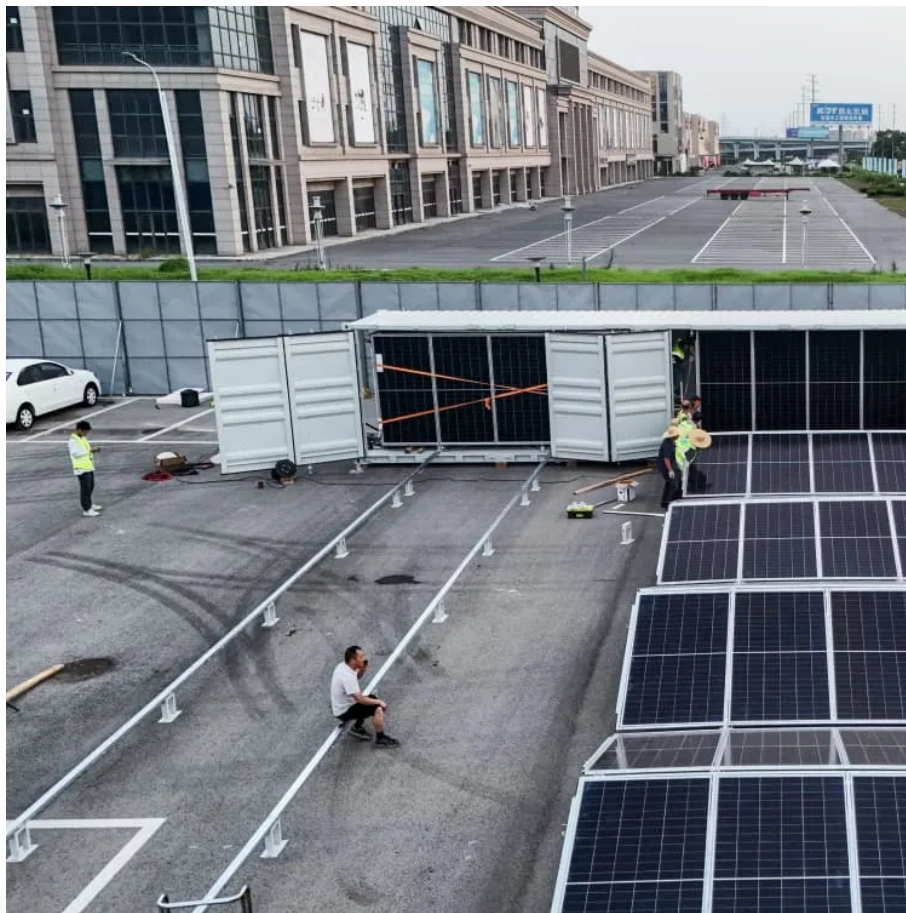


The inverter requires a voltage of 12v





Overview

What is a 12V DC power inverter?

This is where a power inverter comes in. Definition and Working Principle A 12V DC power inverter is a device that converts low-voltage direct current (DC) power from a 12V battery (such as a car battery or deep-cycle battery) into 120V alternating current (AC) power, making it suitable for household appliances and electronic devices.

What is the input voltage of a solar inverter?

Input voltage indicates the DC voltage required to operate the inverter. Inverters generally have an input voltage of 12V, 24V, or 48V. The inverter selected must match the power source, such as batteries or solar panels. Solar and EV systems usually use higher input voltages, such as 48V or more.

How much power does an inverter use?

An inverter uses a small amount of energy during the conversion process. The difference between the input power and the output power is expressed in percentages. The efficiency of modern inverters is more than 92 %. This means that a maximum of 8 % of the power consumption is used to convert battery voltage to 230V/50Hz.

What is a simple 12V to 220V inverter?

Simple 12V to 220V inverters find widespread use in automotive applications, solar power systems, emergency backup power, and portable power solutions. Understanding load characteristics helps determine appropriate inverter specifications and ensures reliable operation.



The inverter requires a voltage of 12v

12V vs. 24V vs. 48V Power Inverters: How to Choose the Right Voltage

Sep 8, 2025 · When shopping for a power inverter, most beginners fixate on wattage or price--but the input voltage (12V, 24V, or 48V) is just as critical. Pick the wrong voltage, and your inverter ...

12 Volt DC Power Inverter: In-Depth Learning and Buying ...

Mar 31, 2025 · A 12V DC power inverter is a device that converts low-voltage direct current (DC) power from a 12V battery (such as a car battery or deep-cycle battery) into 120V alternating ...

Power inverters 12v

May 24, 2025 · For example, for a 12V battery, its terminal voltage may vary between 10V and 16V, which requires the inverter to ensure normal operation within a large range of DC input ...

How To Read And Interpret An Inverter ...

4 days ago · Input Voltage Input voltage indicates the DC voltage required to operate the inverter. Inverters generally have an input voltage of 12V, ...

A comprehensive guide to inverter voltage

Dec 18, 2024 · What is a 12VDC to 120VAC inverter? 12VDC to 120VAC Inverter is a common device that converts 12V DC power to AC power with a nominal output of 120V. 120 volts AC ...

Complete Guide to Building a DC to AC Inverter Circuit: 12V ...

1 day ago · A DC to AC inverter circuit transforms 12V DC input into 220V AC output, enabling you to power standard household devices from battery sources. This comprehensive guide will ...

Complete Guide to Building a DC to AC ...

1 day ago · A DC to AC inverter circuit transforms 12V DC input into 220V AC output, enabling you to power standard household devices from battery ...

How Does Input Voltage (12V, 24V, 48V) Affect Inverter ...

Aug 12, 2025 · When selecting a low voltage ac inverter for your industrial application, understanding the impact of input voltage is crucial. The choice between 12V, 24V, and 48V ...

How To Read And Interpret An Inverter Specification

4 days ago · Input Voltage Input voltage indicates the DC voltage required to operate the inverter. Inverters generally have an input voltage of 12V, 24V, or 48V. The inverter selected must ...

Frequently Asked Questions about Inverters



Frequently Asked Questions about Inverters How much battery capacity do I need with an inverter? As a rule of thumb, the minimum required battery capacity for a 12-volt system is ...

12 Volt DC Power Inverter: In-Depth Learning ...

Mar 31, 2025 · A 12V DC power inverter is a device that converts low-voltage direct current (DC) power from a 12V battery (such as a car battery or ...

Which Is Better for Solar -- 12V, 24V, or 48V Inverter Systems?

Dec 5, 2025 · Inverter Voltage Explained: Choosing Between 12V, 24V, and 48V for Efficient Solar Design When designing a solar power system for your home or business in Zimbabwe, one of ...

What Is A 12V Inverter And Where Is It Used?

What defines a 12V inverter system? A 12V inverter system centers on converting DC to AC power using a 12V battery source. It includes components like MOSFET transistors, ...

Contact Us

For technical specifications, project proposals, or partnership inquiries, please visit:

<https://flightmasters.eu>

Scan QR Code for More Information





<https://flightmasters.eu>