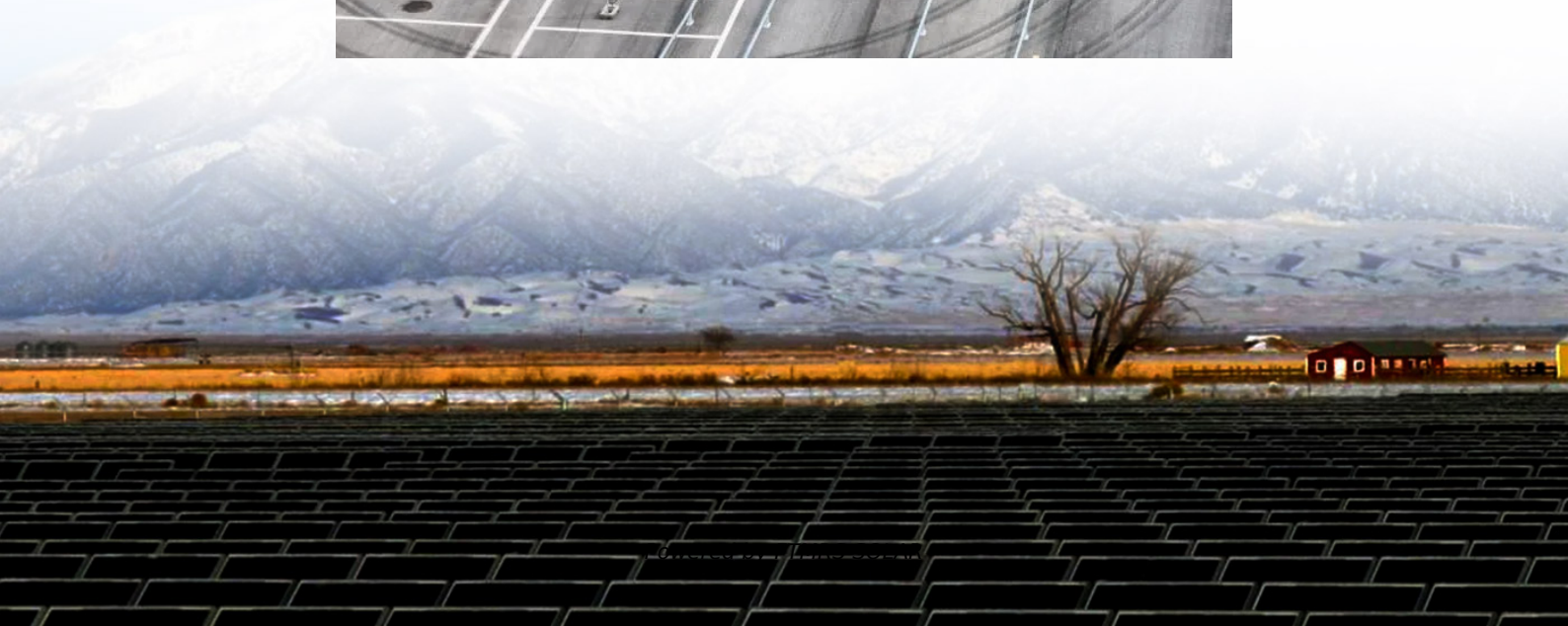
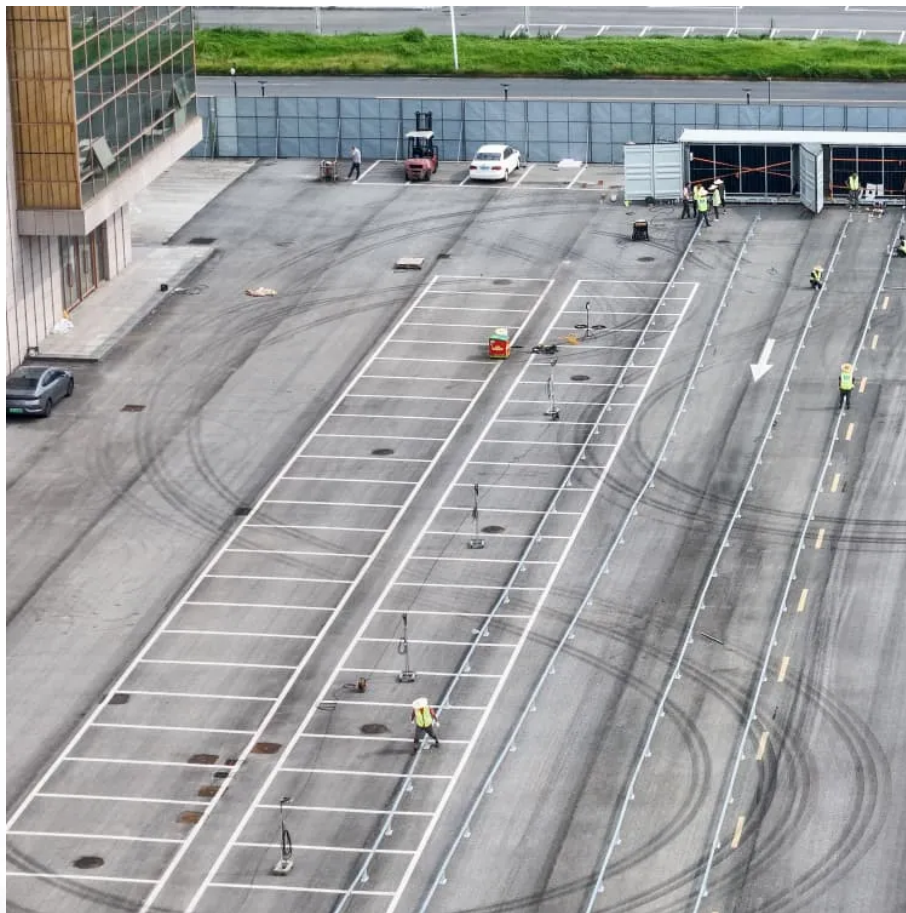


The inverter output contains a DC component





Overview

What are the components of a DC inverter?

DC Input: This is where the inverter connects to the DC power source. The power source could be solar panels, batteries, or other DC supplies. This component ensures that the inverter can receive electrical energy from these sources. **Rectifier:** In some inverters, a rectifier is essential, especially for converting AC to DC.

What is a DC input in a solar inverter?

The DC input is the power input for solar panels or batteries. Poor quality terminals or improper surge protection can cause power fluctuations or even system failure. It consists of the following two parts: **Fuse:** The fuse automatically opens if the current is too high, protecting the inverter from damage.

What is an inverter circuit?

An inverter circuit is an important power electronic device that converts direct current (DC) into alternating current (AC), widely used in renewable energy systems, UPS units, and motor drives. In this article, we will discuss the basic working principles of inverter circuits along with different types and their applications.

What are the parts of a power inverter?

It consists of the following two parts: **Fuse:** The fuse automatically opens if the current is too high, protecting the inverter from damage. **DC disconnect switch:** The DC disconnect is the safety valve of the system and ensures safe operation of the drive during maintenance. **2. MPPT Controller**



The inverter output contains a DC component

Solar Inverter Components -- Key Parts and ...

6 days ago · A solar inverter is an electronic device that changes DC electricity from solar panels into AC electricity, which is the type ...

UNIT V INVERTERS

Sep 12, 2025 · Introduction to Inverters The word 'inverter' in the context of power-electronics denotes a class of power conversion (or power conditioning) circuits that operates from a dc ...

Inverters Inside: Components and How It ...

Nov 18, 2023 · An inverter, at its core, is a power electronic device that changes DC, often from batteries or solar panels, into AC, the type of ...

What's Inside Your Inverter? Main Components for Reliable ...

Mar 20, 2025 · FAQ Q: What does an inverter contain? A: The main components included in the inverter are: DC input interface, MPPT controller (special for solar inverters), inverter circuit ...

Solar Inverter Components

Apr 28, 2025 · 1. Solar Inverter Components A solar inverter is a crucial part of a solar power system. It converts the direct current (DC) from solar panels into alternating current (AC). To ...

Inverters Inside: Components and How It Works

Nov 18, 2023 · An inverter, at its core, is a power electronic device that changes DC, often from batteries or solar panels, into AC, the type of current that powers most of our household ...

Introduction to Inverters

Jul 23, 2025 · The main advantage of using AC current over DC current is that it helps to supply current to long distances without involving much cables. Block Diagram of Inverter Inverters ...

Solar Inverter Components

Apr 28, 2025 · 1. Solar Inverter Components A solar inverter is a crucial part of a solar power system. It converts the direct current (DC) from solar ...

Inverter Circuit (DC To AC Converter) Know How Does It Work

An inverter circuit is a power electronics circuit that converts direct current (DC) to alternating current (AC). Learn about inverter, Types, and applications.

Inverter Circuit (DC To AC Converter) Know ...

An inverter circuit is a power electronics circuit that converts direct current (DC) to alternating current (AC). Learn about inverter, Types, and ...



How does the inverter works ? - PCB HERO

Mar 5, 2025 · 2. Key Components of an Inverter DC Input Source: Provides the DC power to be converted (e.g., 12V, 24V, or 48V battery). Oscillator Circuit: Generates a high-frequency AC ...

Solar Inverters Components

A solar inverter converts the DC electricity generated by photovoltaic (PV) panels into AC power compatible with the electrical grid or local consumption. It's a vital Balance of System (BOS) ...

The inverter output contains a DC component

The DC power source provides the necessary input for the inverter. This source can be a solar panel, battery, or any system generating direct current. Without this input, the inverter cannot ...

Solar Inverter Components -- Key Parts and Their Functions

6 days ago · A solar inverter is an electronic device that changes DC electricity from solar panels into AC electricity, which is the type commonly used in homes and businesses. This article will ...

Contact Us

For technical specifications, project proposals, or partnership inquiries, please visit:

<https://flightmasters.eu>

Scan QR Code for More Information





<https://flightmasters.eu>