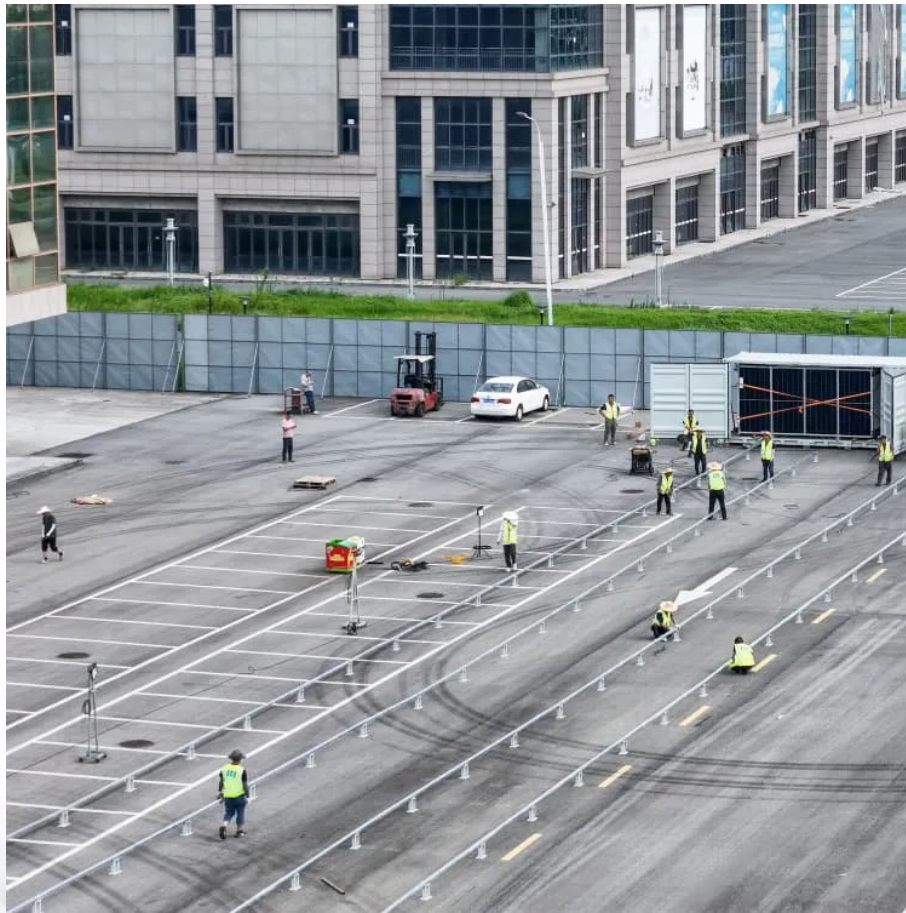


The data communication functions of the base station include





Overview

What is a base station in a telecommunications network?

A base station is a critical component in a telecommunications network. A fixed transceiver that acts as the central communication hub for one or more wireless mobile client devices. In the context of cellular networks, it facilitates wireless communication between mobile devices and the core network.

Why is a base station important in wireless communication?

A base station is fundamental in wireless communication, because it facilitates the connection between your device and the wider network. Without base stations, mobile data and voice services would be impossible, as there would be no infrastructure to handle the transmission of signals.

What are the functions of a base station?

1. Signal Transmission and Reception: One of the primary roles of a base station is to transmit and receive signals from mobile devices within its coverage area. It converts data signals into radio waves and vice versa, facilitating communication between users and the network. 2.

What is a base station in a Wi-Fi network?

The base station in a Wi-Fi network is a device that connects to an internet service provider (ISP) and enables wireless communication between devices such as computers, smartphones, and tablets. It acts as a central hub for the network, transmitting and receiving data between the devices and the ISP.



The data communication functions of the base station include

Base Stations

Jul 23, 2025 · The present-day tele-space is incomplete without the base stations as these constitute an important part of the modern-day scheme of wireless communications. They are ...

What Does a Base Station Do and Why Is It Essential for ...

Sep 5, 2025 · A base station is a fixed point of communication between mobile devices and the wider telecom network. It transmits and receives radio signals, enabling your phone to access ...

What Is a Base Station? Definition and How It Works

Oct 10, 2025 · A base station is a fixed transceiver that serves as the central communication point for mobile devices within a defined geographical area, known as a cell. It is sometimes called ...

What Is the Role of a Base Station in Wireless Communication?

Jun 27, 2025 · Base stations are the backbone of wireless communication networks, playing a pivotal role in signal transmission, network reliability, and high-speed data connectivity. As ...

What are Base Station in Telecommunications?

Nov 21, 2025 · The Role and Importance of Base Stations Base stations enable voice, data, and internet access. They transmit radio signals within a set area. You stay connected as you ...

Base Station's Role in Wireless Communication Networks

The base station also performs the reverse function, converting digital data back into radio waves to send to your device, enabling consistent communication. Can base stations impact network ...

What is a Base Station in Telecommunications?

What is a Base Station? A base station is a critical component in a telecommunications network. A fixed transceiver that acts as the central communication hub for one or more wireless mobile ...

Base Stations: The Core and Future of Telecom Networks

Sep 12, 2025 · A telecom base station, also known as a mobile communication base station, is a wireless communication device comprised of antennas, transmitters, and controllers. It ...

What Is A Base Station?

Apr 22, 2024 · A base station is an integral component of wireless communication networks, serving as a central point that manages the transmission and reception of signals between ...

Understanding Base Stations: The Backbone of Wireless Communication



Jan 6, 2025 · Conclusion Base stations are the backbone of modern wireless communication networks. They ensure that mobile devices can connect to the internet, make calls, and send ...

Base Stations

Jul 23, 2025 · The present-day tele-space is incomplete without the base stations as these constitute an important part of the modern-day scheme ...

What is a Base Station in ...

What is a Base Station? A base station is a critical component in a telecommunications network. A fixed transceiver that acts as the central ...

Contact Us

For technical specifications, project proposals, or partnership inquiries, please visit:

<https://flightmasters.eu>

Scan QR Code for More Information



<https://flightmasters.eu>